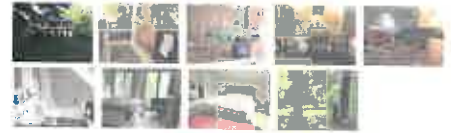


https://www.sabbaticalhomes.com/  
Home\_Rent\_House\_Rental\_Home\_Sharing\_House\_Share\_Williamstown\_Massachusetts\_United\_States\_of\_America\_117271.htm

Listing # 117271



Rates From  
**USD 1250 Monthly**

[CONTACT MEMBER](#)



[ADD TO FAVORITES](#)

[TELL FRIEND](#)

## PRIVATE COUNTRY RETREAT, WITH BIRDS

This well-built home features a large, well-proportioned living room with coffered ceilings, wood floors, three bedrooms, a study, two bathrooms, a laundry room with washer and dryer, and a kitchen and dining room flooded with light from six large picture windows. The kitchen features a mosaic backsplash, Jenn Air range, hardwood cabinets, and ceramic tile floor.

The house is set on a half-acre half an acre, which includes mature specimen trees of many species, including magnolias, black walnut, fragrant locust, dogwood, and a rare dawn sequoia. Seclusion is guaranteed by a rock-solid fence of double hemlock pallings, which create a green oasis. Abundant shade in the summer with spectacular foliage in the fall. Mountain views in winter. The entire property is fenced, and is thus ideal for dog owners. We consider pets on an individual basis.

### Basics:

Number of Bedrooms	Number of Bathrooms	Number of Offices
<b>3</b>	<b>2</b>	<b>1</b>
Surface Size	Suited for	Property Type
<b>2150 Sq. Feet</b>	<b>6 people</b>	<b>House</b>

### Availability:

**Available from Monday, January 15, 2018 until Thursday, May 31, 2018**

**Available from Friday, June 1, 2018 until Friday, August 31, 2018**

Minimum Stay Flexible  
**1 week(s)** With Dates  
Yes **Comments on Dates**  
*Looking for longterm tenant for spring; willing to do periods of 1 week or more after June 1*

Map Satellite



(<https://maps.google.com/maps?ll=42.707933,-73.180015&z=14&t=m&hl=en&gl=US&mapclient=apiv8>) Terms of Use ([https://www.google.com/intl/en\\_US/help/terms\\_maps.html](https://www.google.com/intl/en_US/help/terms_maps.html))  
*\*Approximate location of the property is within the blue radius. Red markers indicate surrounding points of interest including schools, universities, libraries and museums.*

City *Williamstown*

MA

Postal Code - State or Province *01267*

Country *United States of America*

Neighborhood Keywords

Closest University *Williams College*

University nearby *Williams College, Massachusetts College of Liberal Arts, Bennington College*

## RENTAL PRICE:

Asked

**USD 1250 Monthly**

Rental Fee Comments

*The monthly rate holds for January 15-May 15; after that, the rate will be \$1000 per week, or \$2000 per month*

Rent Negotiable

Yes

Utilities Included

Yes

Cleaning Services Included

No

## Surroundings:

Rural Environment

Near Woods

Near Ocean/Lake

Near Restaurants

Near Mountains

## Additional Information:

Furnished

Available for Academic Term

Off Campus

Available for Short Term

Writing or Country Retreat

Summer Term

## Amenities:

Modern Kitchen  
Washer  
Dryer  
Dishwasher  
Air-Conditioning  
High Speed Internet  
Wireless Network  
Printer  
Stairs  
Reserved Parking  
Piano  
TV  
Balcony or Patio  
Garden

*Other:*


## Considerations:

Kid Friendly <b>Yes</b>	Small Children Safe <b>Yes</b>	Smoke Free <b>Yes</b>
Pets Welcome <b>Negotiable</b>	Car Available <b>No</b>	

## Perform Housesitting Duties?:

No

## ABOUT MEMBER

Name SHAWN (Alias)  
Status  
 Academic Faculty or Staff (Universities, Research Institutes, and Museums) (Status Confirmed)  
(0) Number of success-based contributions  
Member Since Sep 6 2017  
This member has no review  
About Me I'm a Professor of English at Williams College specializing in American Literature and documentary film.  
<https://english.williams.edu/profile/srosenhe/>  
(<https://english.williams.edu/profile/srosenhe/>)



This member has referred 0 registered user(s) (0 academics)

## REVIEWS

*This member has no review*